

# 2021 Annual Report



**March 11, 2022**

# 2021 Annual Report

- Required by the Pinelands Protection Act and Executive Order.
- Highlights the Commission's work during the 2021 calendar year.

## Scenes around the Pinelands in 2021



**Above:** This bald eagle was photographed from a distance in the Pinelands in November 2021. Once nearly extinct, the bald eagle population in New Jersey is now soaring, thanks to conservation efforts.



**Above:** A bright pink sunset reflected off Atsion Lake in Wharton State Forest in this photo that was taken in mid-November of 2021. Wharton State Forest encompasses approximately 122,800 acres.



**Above:** This variegated fritillary butterfly was photographed on a patch of native, sweet goldenrod at the Pinelands Commission's headquarters in August 2021.



**Above:** Native sheep laurel could be seen blooming in the Pinelands in late May. The deep pink blooms brighten the landscape.



# 2021 Planning Activities

## The Commission:

- Adopted new stormwater management rules that require the use of green infrastructure and other more stringent standards that better protect Pinelands resources
- Authorized the use of four new advanced wastewater treatment technologies in the Alternate Design Wastewater Treatment Systems Pilot Program
- Reviewed 155 municipal master plan and ordinance amendments
- Continued the work of the Climate Committee
- Successfully garnered the National Scenic Byway designation for the 130-mile Pine Barrens Byway



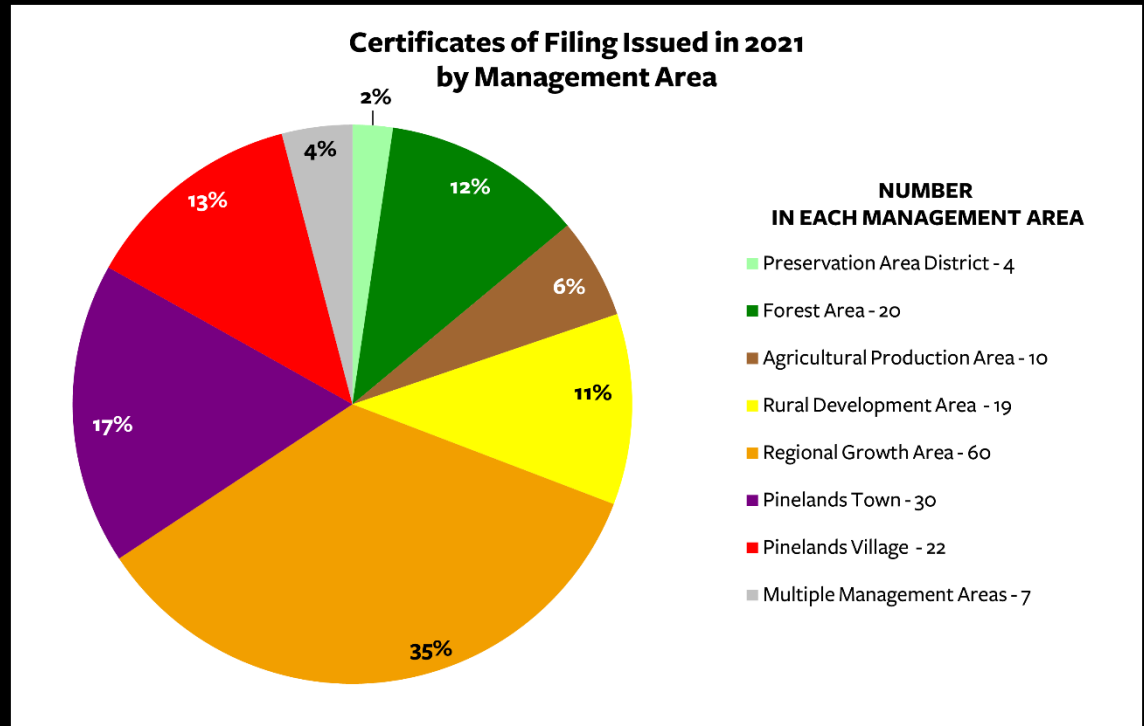
# Pinelands Development Credit Program 2021 Activity



- 72.70 PDCs were allocated to 36 sending area properties.
- 53.00 PDCs were severed, protecting 1,705 acres in the APA and SAPA. Since 1982, 57,147 acres in the Pinelands Area have been permanently preserved through the PDC Program.
- 31.25 PDCs were sold, with an average sales price of \$57,752 per PDC (\$13,000 higher than the average sales price in 2020).
- 60.00 PDCs were redeemed for projects in 9 municipalities.

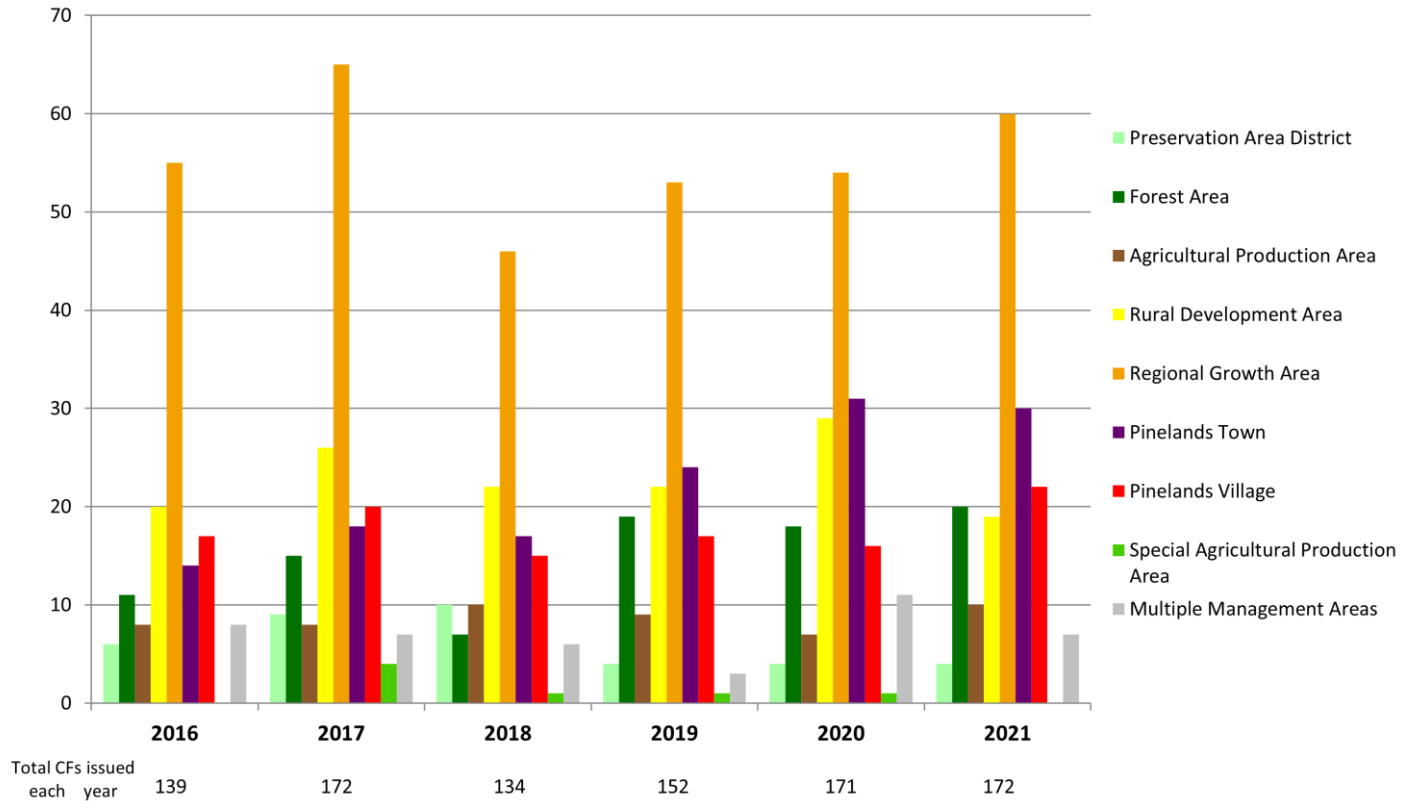
# 2021 Regulatory Activities

- 172 Certificates of Filing were issued, signifying the completion of private development applications.
- 65% (112) were for residential development
- 65% (112) were for projects in RGAs, Towns or Villages (development-oriented management areas)

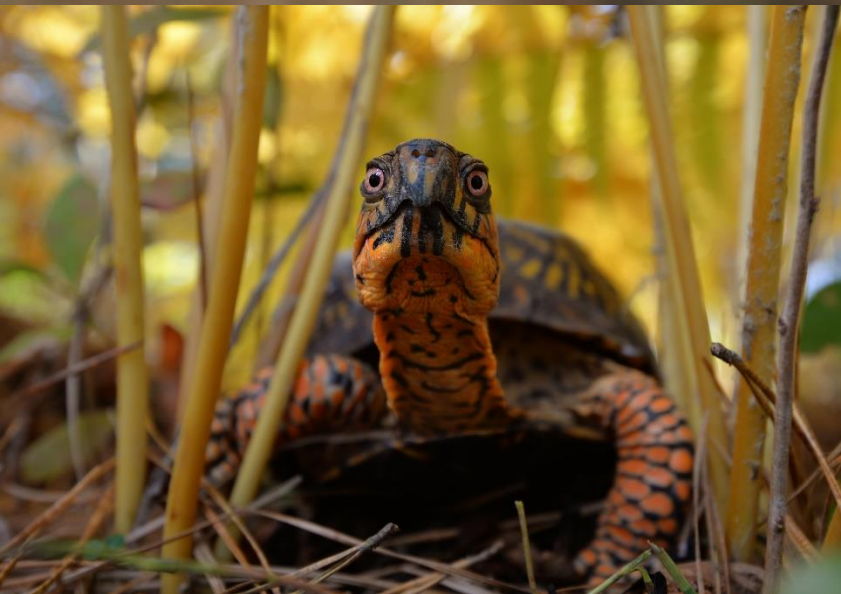


# 2021 Regulatory Activities

**Certificates of Filing by Management Area  
2016 - 2021**



# 2021 Science & Research Activities



The Commission advanced numerous research projects, including work on:

Snake Fungal Disease

Rare Snake Population Monitoring

Microorganism Study

Endocrine Disruption Study

Joint Corn Snake Radio Tracking Fence Study

Eastern Kingsnake Study

Corn Snake and Kingsnake Genetic Research

Ground Skink eDNA Study

Eastern Box Turtle Study

Long-term Environmental Monitoring (surveys of frogs and toads and water quality and water levels)

# Public Information, Education & Outreach 2021 Activity

Responded to more than 1,574 public inquiries;

Organized, hosted and recorded 28 educational webinar presentations;

Maintained, enhanced and reviewed every page and link on the Commission's website, which was viewed a total of 177,712 times;

Launched a new Twitter page;

Took and shared 1,065 photos on Instagram and 39 videos on YouTube; and

Organized and carried out the first-ever virtual Pinelands Short Course, the fifth annual Pinelands Summer Short Course and the first virtual Pinelands Orientation for Newly Elected Officials.





# 2021 Finances



*New Jersey Legislature*  
★ *Office of* LEGISLATIVE SERVICES ★  
**OFFICE OF THE STATE AUDITOR**

Pinelands Commission

Fiscal Year 2020

**David J. Kaschak**  
*State Auditor*



The Commission's 2020 Fiscal Year Audit, which ended June 30, 2020, included no compliance findings or questioned costs.

During Fiscal Year 2021, application fee revenue totaled \$643,428.96. This was a \$264,000 increase from Fiscal Year 2020.

# Celebrating 40 Years of the Pinelands Comprehensive Management Plan (CMP)



The Pinelands CMP turned 40 on January 14, 2021.

The Commission marked the milestone by creating and sharing videos, numerous informative social media posts and e-mails.

Pictured: Roundtable Reflection with original Commission members and staff.

A dirt road winds through a dense pine forest. The road is light-colored and shows tire tracks, curving gently to the right. The trees are tall and thin, with green needles and brown trunks. Sunlight filters through the canopy, creating dappled shadows on the road. The sky is a clear, bright blue. The overall scene is peaceful and serene.

**The End**